



# **Math Tablet 2.02**

for Windows Mobile Smartphone

# Math Tablet 2.02

for Windows Mobile Smartphone

Math Tablet for Windows Mobile Smartphone is based on Math Tablet for the Pocket PC and Windows XP. Complete documentation for the PocketPC version is included in this Smartphone version installation package. While the Smartphone version of MathTablet is a powerful computational tool it includes only a subset of the features available on the PocketPC and Windows XP version. A comparison of the two version is shown below.

	PocketPC	Smartphone
Algebraic Entry	x	x
RPN Entry	x	x
Matricies	x	x
Complex numbers	x	x
CSV Import/Export	x	
Scripting	x	x
Parametric plots	x	
Implicit plotting	x	
Format Overriding	x	
Scientific Library	x	x
Matrix Library	x	x
Graphing Library	x	x
Statistical Library	x	x
Scripting Library	x	x
T.V. Money Library	coming soon	x
Formula Library	x	
Hexadecimal Library	x	x
Conversion Library	x	x
Conversions Editor	x	
User defined keys	x	
XCAS Support	x	
Table Library	x	

Feature Comparison

# Math Tablet 2.02

for Windows Mobile Smartphone

## Installing Math Tablet

Math Tablet supports small (176x220) or QVGA (240x320) or QVGA Landscape (320x240) screen. Select the install folder appropriate for your device.

### Method 1

1. Connect your Smartphone to your desktop computer using ActiveSync.
2. Download and unzip the install files. If you're reading this you probably have already completed this step.
3. Run the Setup program

### Method 2

1. Connect your Smartphone to your desktop computer using ActiveSync.
2. Download and unzip the install files. If you're reading this you probably have already completed this step.
3. Open the CAB folder and locate the CAB file for your device.  
MathTabletSMALL.ARM.CAB = small screens  
MathTabletQVGA.ARM.CAB = QVGA portrait screen  
MathTabletQVGALS.ARM.CAB = QVGA Landscape screen
4. Copy the appropriate CAB file to your device
5. Click on the CAB file on your device.

# Math Tablet 2.02

for Windows Mobile Smartphone

## Registering Math Tablet

Math Tablet comes with a 14 day trial period. After 14 days you must purchase and register the software. To register the software

1. Write down the owner name that is displayed when you first run the software
2. Purchase the software from a reseller and provide the owner name at the time of purchase. Visit [www.statsnow.net/smartphone](http://www.statsnow.net/smartphone) for a list of resellers.

# Math Tablet 2.02

for Windows Mobile Smartphone

## Navigation numeric keypad

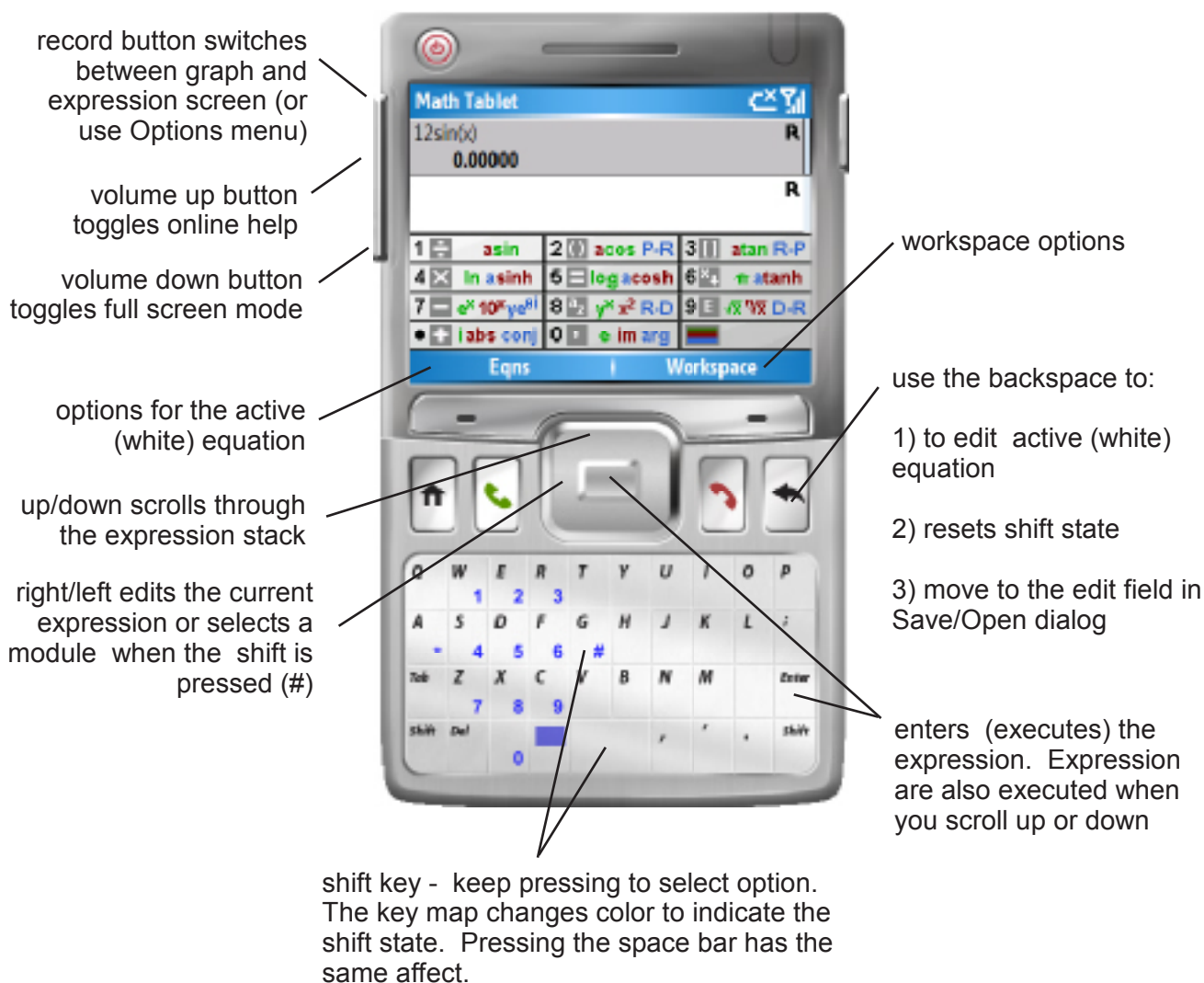


# Math Tablet 2.02

for Windows Mobile Smartphone

## Navigation alpha-numeric keypad

When the device has an alpha-numeric keypad, you may enter text directly using the keypad. You can also use the special keys described below.



In addition, the user may remap the function of the keypad using the charmap.txt file. This is described on the following page.

# Math Tablet 2.02

for Windows Mobile Smartphone

## Navigation Re-mapping the alpha-numeric keypad

Devices which use a landscape display and have a keyboard utilize a special file to adjust the keyboard mapping. This file is called `charmap.txt` and is installed on the Smartphone in the same folder as the MathTablet application.

The `charmap.txt` file can be used to change the function of keys on the keypad. The file contains two parts each terminated with the two character sequence `"||"`. The first part remaps keys under normal conditions, the second part remaps key when the popup pad is active, ie, after pressing the `#` or space bar. Each part is composed of a series of two characters. The first is the desired character, the second is the character to which is will be remapped. The provided `charmap.txt` file is shown below.

```
‘.AaBbCcDdEeFfGgHhIiJjKkLlMmNnOoPpSsTtUuVvWwXxYyZz&x||w1e2r3s4d5f6z7x8c9a.W1E2R3S4D5F6Z7X8C9A.?0’.||
```

The first part is:

```
‘.AaBbCcDdEeFfGgHhIiJjKkLlMmNnOoPpSsTtUuVvWwXxYyZz&x
```

The first two characters re-map the `'` character to the `.`. On the Moto Q, when in numeric mode, the `“.”` would normally produce a `'` character. This is inconvenient, so the `'` is re-mapped. The remaining sequences map uppercase characters to lower case characters. This means you can not accidentally type uppercase characters. The final two characters `&x` map the `&` character, accessible in the Numeric mode, to `“x”`. `“x”` is a commonly used variable.

The second part, which is only active when the popup pad is active, ie after pressing the `#` or space bar, is:

```
w1e2r3s4d5f6z7x8c9a.W1E2R3S4D5F6Z7X8C9A.?0‘.
```

This sequence re-maps the alpha characters on the keypad to numbers. This means that you can access the popup pad items by pressing the corresponding letter, instead of a number - so you don't have to switch to Numeric mode to access the items.

A copy of the `charmap.txt` file is provided in the install zip file. You may edit this file using an ASCII editor, such as `notepad.exe`, to change the mapping on your device. After editing the file, copy it to the MathTablet program folder on your Smartphone and restart MathTablet.

# Math Tablet 2.02

for Windows Mobile Smartphone

## Navigation

Math Tablet			
x=23			R
23.000			
x+34			R
57.000			
1	sin	2	cos
÷	asin	( )	acos
3	tan	[ ]	atan
4	ln	5	log
×	asinh	=	acosh
6	π	×	atanh
7	e <sup>x</sup> 10 <sup>x</sup>	8	y <sup>x</sup> x <sup>2</sup>
-	ye <sup>Bi</sup>	a <sub>z</sub>	R-D
9	√x √[n]x	E	D-R
•	i abs	0	re im
+	conj	,	arg
Eqns		Workspace	

key map show the functions performed by each key. Different functions are access by pressing the # key.

repeatedly pressing the # key changes the key map border color. The color corresponds to the function mapped to the key. In this case, pressing 1 enters "sin()" on the stack

Math Tablet			
x=23			R
23.000			
x+34			R
57.000			
1	sin	2	cos
÷	asin	( )	acos
3	tan	[ ]	atan
4	ln	5	log
×	asinh	=	acosh
6	π	×	atanh
7	e <sup>x</sup> 10 <sup>x</sup>	8	y <sup>x</sup> x <sup>2</sup>
-	ye <sup>Bi</sup>	a <sub>z</sub>	R-D
9	√x √[n]x	E	D-R
•	i abs	0	re im
+	conj	,	arg
Eqns		Workspace	

To enter 10sin(3.1) you would press the following keys:

1 0    enters 10

# # 1    turns the key map green and enters sin()

3 \* 1    enters 3.1, the \* key is the decimal point



# Math Tablet 2.02

for Windows Mobile Smartphone

## Editing Expressions

Math Tablet keeps track of your last 100 entries. You can go back and edit any of these entries - all dependent entries will be automatically updated.

Use the Up-Down navigation keys to scroll through your entries  
(see the previous pages)

Use the Right-Left navigation keys to edit entries

Use the Backspace to delete part of your expressions

Right-Left navigation keys select portions of your expression. Selected portion is highlighted

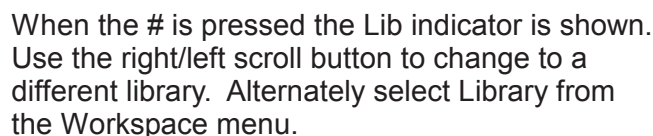
Backspace **deletes** the highlighted selections

New characters are inserted **after** the highlighted section



## for Windows Mobile Smartphone

Math Tablet for Windows Mobile Smartphone includes a set of libraries (modules). These modules are identical in function to the PocketPC version. For details on library functions, consult the PocketPC User's Guide.



www.statsnow.net

# Math Tablet 2.02

for Windows Mobile Smartphone

## Graphing

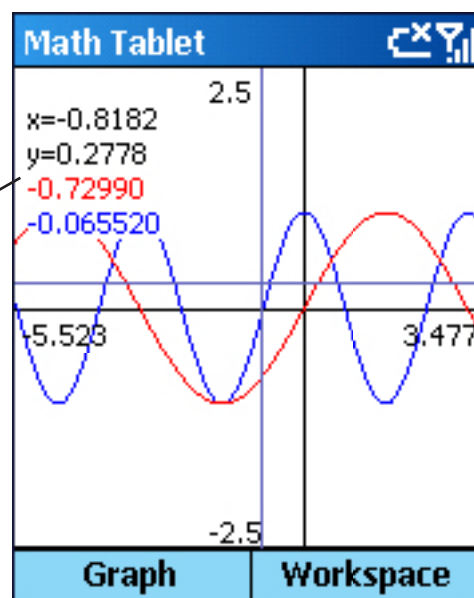


1. Enter an expression as a function of x
2. Mark that expression for graphing using the Eqns menu
3. Switch to the graph screen using the Record button or the Workspace menu

Math Tablet can graph up to 10 equations at once.

Enter (navigation) key toggles the Trace mode.

Zoom In is centered on the trace cross hairs, or the center of the screen if trace is turned off



Use the numeric keys to scroll and scale the graph. Select Help from the Graph menu to place the help on the graph background.

# Math Tablet 2.02

for Windows Mobile Smartphone

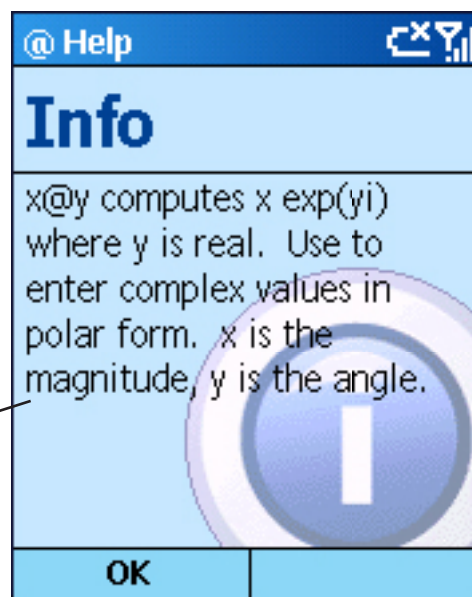
## On-line Help

Math Tablet includes on-line help for functions. To enable on-line help, press the Volume Up button, or select Help from the Workspace Menu.



When help is enabled, the keypad shows a yellow ?

When you select a function, help for that function is displayed.



Complete help for functions is available in the included User's Guide

# Math Tablet 2.02

for Windows Mobile Smartphone

## Contacts and Downloads

Additional information: [www.statsnow.net](http://www.statsnow.net)

Support email: [support@statsnow.net](mailto:support@statsnow.net)

Free scripts: [www.statsnow.net/mathtablet](http://www.statsnow.net/mathtablet)

Free upgrades: [www.statsnow.net/smartphone](http://www.statsnow.net/smartphone)